

Methodology

The Diagnostic Assessment is aimed to assess the current AMB (Anemia Mukta Bharat) Supply chain and to identify the bottlenecks. It has been developed by the Technical Team at IEG along with consultation from development partner agencies – UNICEF, UNDP, Evidence Action, Nutrition International and IPE Global-WeCan.

The Questionnaire consists of six sets of questionnaires for each of the following levels:

1. State
2. District
3. Block
4. Sub Centre
5. Schools
6. Angan Wadi Centre

Sampling

The Assessment will be conducted across all Indian states i.e. 30 excluding the Union Territories. Further, two Aspirational districts from each state will be selected based on the higher anemia prevalence in children and women (NFHS – 4, 2015-16). In case, the State has only one Aspirational district, the selection of the second district will be based on the higher anemia prevalence in children and women (NFHS – 4, 2015-16). In total 60 districts will be selected for the Assessment.

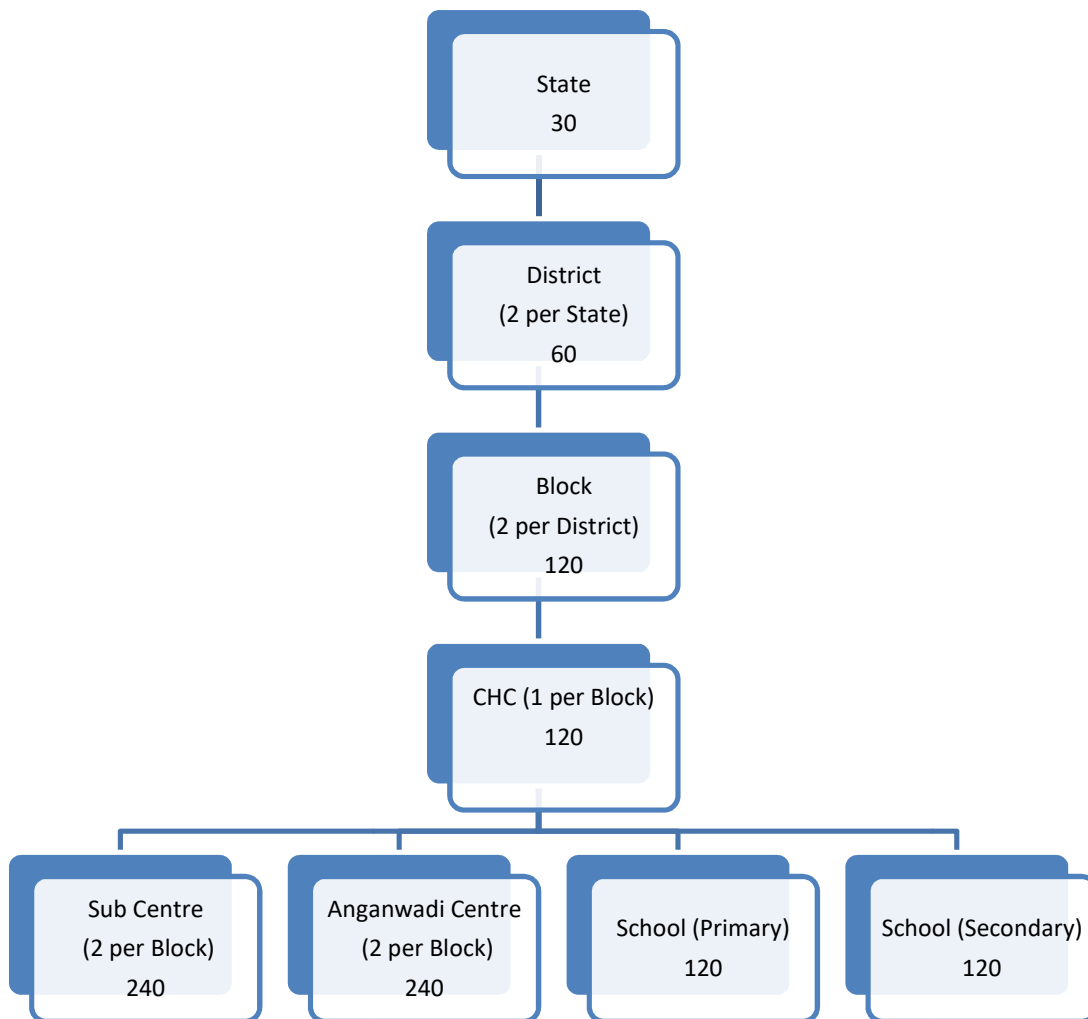
From each district two blocks will be selected based upon their distance from the district headquarter (farthest and nearest) and the Community Health Centre (CHC) of the same blocks will be taken for the study. A total of 120 Blocks and 120 CHCs will be covered.

Further, in each block two Sub Centres as well as two Anganwadi Centres and two schools (1 primary and 1 secondary Govt. school) will be randomly selected. A total of 240 Sub Centres, 240 Angan Wadi Centres, 120 Primary Schools & 120 Secondary Schools will be covered.





Sampling Framework:





List of people to be interviewed at various levels:

	State	Regional / Divisional	District	Block	Sub Centre	AWC	Schools
Whom to interview	-Nodal Officers (CH, AH, MH), State Health Department	-Store warehouse manager, DEO, Regional Warehouse	Health: CMO, RCHO, DIO Education: DEO, DRC, ICDS: DPO	Health: BMO Education; DEO, ICDS: CDPO	ANM, ASHA, MPW	AWW, ASHA	- Nodal teacher, Student, Principal
	-Procurement Officer, Procurement team, State Medical Services Corporation	-Joint director, Regional Joint Director, State Health Department	-Store Manager, District pharmacist	-Block Programme Manager, Block Community Manager, Block Resource coordinator		AW/ ASHA Supervisor	
	-State DEO, State Warehouse						
	- State warehouse manager,		-DPM, DCM, OIC, DEO (NHM), District RKSK	-Block pharmacist, Block DEO			
-Development partners /Agencies, Allied ministries (HRD, WCD)			- Municipal corporation, MS/MO	-Alternate Vaccine Delivery, Drug Delivery Boy (If present)			





Abbreviations:

NFHS	National Family Health Survey
CHC	Community Health Centre
CH	Child Health
MH	Maternal Health
AH	Adolescent Health
DEO	Data Entry Operator
HRD	Human Resource Development
WCD	Women & Child Development
CMO	Chief Medical Officer
RCHO	Reproductive & Child Health Officer
DIO	District Immunization Officer
DRC	District Resource Centre
ICDS	Integrated Child Development Services
DPO	District Primary Education Officer
DPM	District Program Manager
DCM	District Community Mobilizer
OIC	Officer in Charge
RKSK	Rashtriya Kishore Swasthya Karyakram
MS	Medical Superintendent
MO	Medical Officer
BMO	Block Medical Officer
CDPO	Child Development Program Officer
ANM	Auxillary Nurse Midwife
ASHA	Accredited Social Health Activist
MPW	Multi Purpose Worker
AWW	Angan Wadi Worker

